




Radial Cement Bond Logs



**Verify Good
Cement Bond
the First Time**

-  Accurate casing bond logs in slim and conventional-sized casing

About This Product

The WOS Radial Cement Bond Log tool provides proven superior responsiveness and reliability even in thin cement sheath conditions. The main application of the Radial Cement Bond Log tool is to assess hydraulic isolation between producing and non-producing zones, a critical factor needed to assess well integrity.

All versions of the WOS Radial Bond Tool provide accurate casing bonds by measuring the amplitude of the first arrival at the 3-ft receiver. A deeper investigating 5-ft receiver confirms the interpretation and shows a formation bond by a full variable density log (VDL) wave display. With circumferential receivers, the RCBL identifies channels in addition to standard cement bond logging. The RCBL tools come in a range of sizes to accommodate casing sizes from 2-3/8" to 20".

Benefits

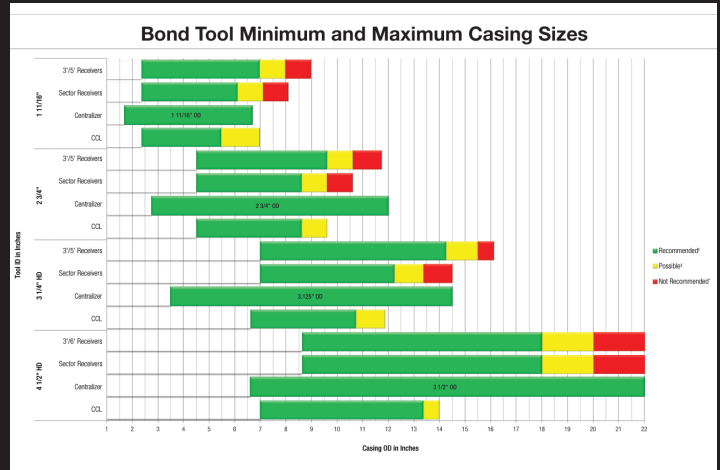
- Full circumferential resolution measurement for better channel identification.
- Full interpretation completed in-house by WOS.
- Capable of running on multiple wireline interfaces.
- 1-11/16" OD slim hole tools operate in casing from 2-3/8" to 6".
- 2-3/4" OD Cement Bond Log tool operates in casing from 4-1/2" to 8-5/8".
- 4-1/2" OD Cement Bond Log tool operates in casing from 8-5/8"-20".

 **360-degree cement map**

Radial Cement Bond Logs

Radial Incremental Bond & Slim Hole Tools

Size OD	1.6875"	2.75"	4-1/2"
Temp Rating	-25F - 375F	-25F - 375F	-25F - 375F
Length (ft)	9.13'	9.13'	10.29'
Weight (lbs)	63	120	202
Min Casing Size	2.38"	4.5"	8.63"
Max Casing Size	6.13"	8.63"	20"
Pressure Rating	20,000psi	20,000psi	20,000psi
Max Tension (ft/lbs)	40,000	60,000	60,000
Number of Sectors	6	8	16
Sector Azimuthal Res	60 degree map	45 degree map	22.5 degree map



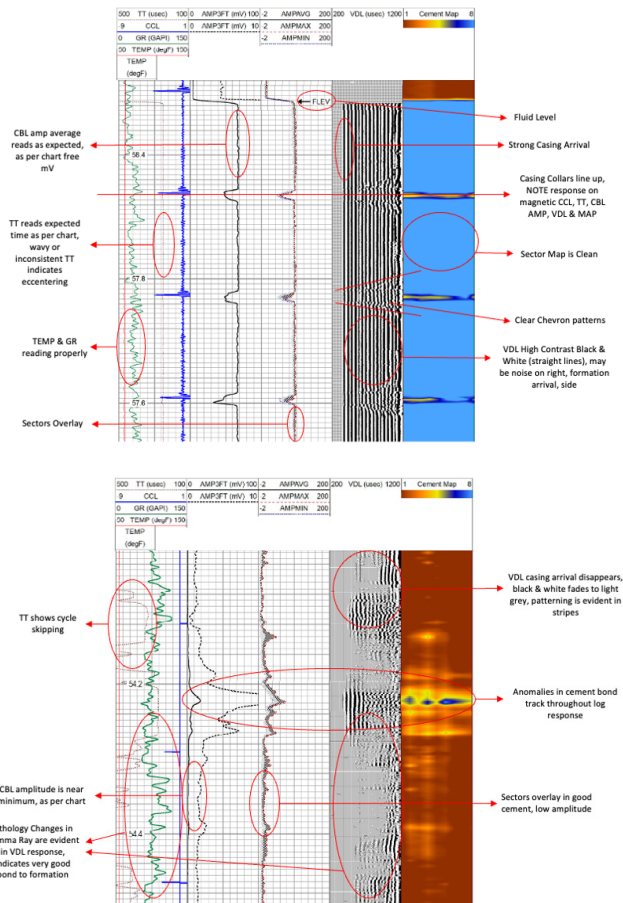
Full interpretation completed in-house by WOS

Features

- The robust design is suitable for horizontal logging.
- Cement bond quality measurement in slim and conventional wells.
- Provides a 360-degree cement map ensuring complete coverage.
- Provide strength, rigidity, and noise isolation.

Complementary Pipe Recovery Tools

- Gamma Ray
- Magnetic Collar Locator
- External probe temperature measurement
- Weight bars as needed
- Roller and bow-spring style centralizers



SCAN CODE TO VIEW PRODUCT PAGE